



KINGSTON

KINGSTON FIFTH WHEELS



BUILT FOR THE LONG HAUL



KF35SB Living area shown with Cottage Red interior and available fireplace

Elegance on the go describes the Kingston. These beautiful fifth wheels come equipped with fine furnishings, special amenities, and a host of convenient features for the ultimate in RV living. Ingenious design creates spacious interiors that boast a full 8' 3" of headroom with generous 6' 2" tall slide-outs. Rich cherry finish throughout, fireplaces, state-of-the-art entertainment centers, residential kitchens, and many other fine features make the Kingston the residence of choice for your RV travels.

KF35SB 42" LCD TV lowered into cabinet

KINGSTON WARRANTY

The best warranty in the industry. For details, please visit our web site at www.crossroadsrv.com. We invite you to compare our quality, value, service program and 2+5 Year Warranty plan with those of our competition. You'll find we are unsurpassed in all four.



KF34RK Rear kitchen shown with available Corian® counter tops

ELEGANT INTERIORS WITH CHERRY WOOD FINISH



KF35SB Bedroom slide-out (King size bed is available)

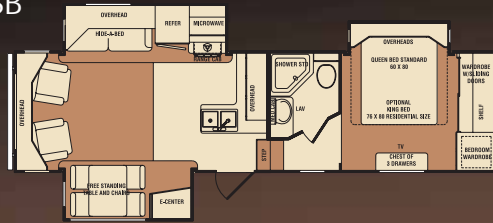


KF30SB Bedroom with cherry chest of drawers and wardrobe



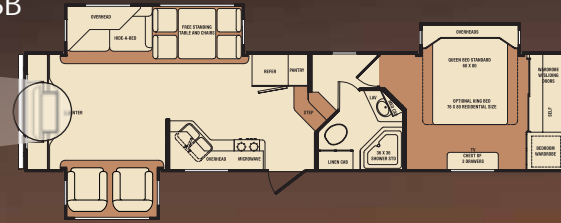
KF34RK Bathroom shown with available Corian® counter top

KF30SB

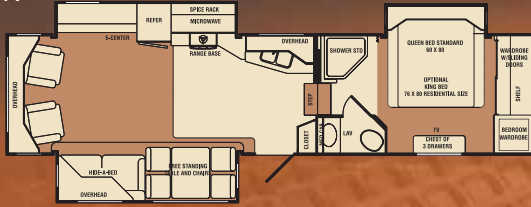


KF35SB

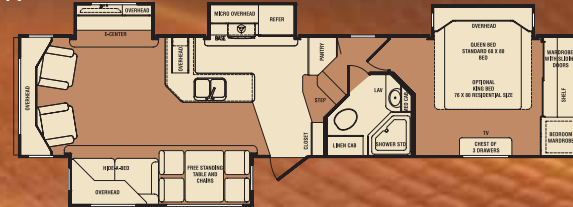
42" LCD TV STANDARD



KF33SK



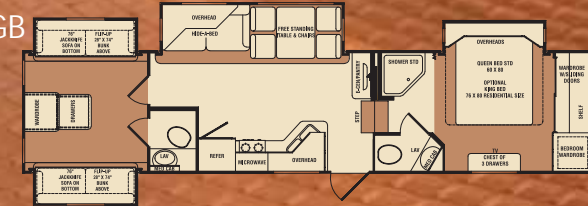
KF36CK



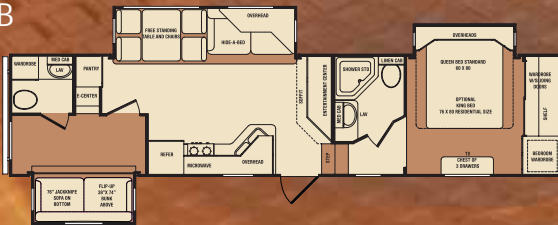
KF34RK



KF36GB



KF34TB



Tanks

- Fresh water capacity - 58 gallons
- Black water capacity - 40 gallons
- Grey/galley capacity - 80 gallons

Standards stated throughout this brochure are partial lists only. See your dealer or visit www.crossroadsrv.com for a complete listing.

SPECIFICATIONS	KF33SB	KF33SK	KF34RK	KF34TB	KF35SB	KF36CK	KF36GB
Dry Weight	9704	9980	10417	10414	10317	10961	11050
Carrying Capacity	3280	3338	3083	2854	2845	1964	2012
Hitch Weight	1984	2318	2500	2268	2162	1925	2062
Axle Weight	7720	7662	7917	8146	8155	9036	8988
Exterior Length	32' 5"	35' 5"	35' 9"	36' 11"	36' 11"	37' 5"	37' 11"
Ext. Height with AC	12' 11"	12' 11"	12' 11"	12' 11"	12' 11"	12' 11"	12' 11"
Tires	235/80R16E	235/80R16E	235/80R16E	235/80R16E	235/80R16E	235/80R16E	235/80R16E

CrossRoads



CONSTRUCTION STANDARDS

1. One-piece, rolled edge rubber roof with 12 year manufacturer's warranty
2. 3/8" Plywood roof decking for full walk-on roof
3. 16" OC aluminum truss roof rafters
4. R-27 fiberglass roof insulation*
5. Aluminum radius roof transition wrap
6. Full fiberglass front cap
7. 13,500 BTU ducted roof air conditioner with wall-mount thermostat & "Quick Cool"
8. Aluminum tube 16" OC studs for sidewalls, endwalls & slideouts
9. Thermo-Foil (PolarTec upgrade insulation package - optional)
10. R-15 sidewall fiberglass insulation*
11. 2 Layers of Luan board – staggered for seamless walls
12. Smooth gel coat fiberglass exterior for easy maintenance
13. 10" Steel I-beam frame
14. 16" OC aluminum tube floor joists
15. R-32 fiberglass floor insulation*
16. 5/8" Lightweight tongue & groove plywood floor decking
17. 1/2" Foam carpet pad
18. Residential grade carpet
19. Full linoleum bathroom floor
20. Power front jacks
21. Electric slideout system(s) with individual room controls
22. 16" Radial tires
23. 6,000 lb EZ lube axles
24. Fully enclosed, insulated underbelly with radiant heat
25. Z-frame with flush bedroom floor

EXTERIOR STANDARDS

26. Tinted glass windows
27. Scare light on door side
28. Rota-Flex pin box by Trailaire
29. Large entry assist handle
30. Roof ladder
31. Extra large capacity cargo storage
32. Thicker baggage doors in cargo area
33. Dual LP tanks
34. A&E 8500 series patio awning
35. Back-up mirror

* R-values based with POLARTEC upgrade insulation package. All R-values are approximated using industry resources and are subject to change without notice.



Dependability that Lasts

What our competitors don't want you to see! Our aluminum frames are bolted not welded. This makes them much stronger and gives them a longer life. Poorly welded frames come apart and are costly to fix.



Trailair Equa-Flex™ Equalizer suspension ensures a smoother ride, more stable towing and improved coach and vehicle safety. On broken pavement at 55 mph, Equa-Flex™ reduced G-force up to 89% (360Hz) at the trailer frame. It's the ultimate rough road remover!



Trailair Rota-Flex™ Pin Box. This pivoting head pin box utilizes a proprietary rubber compound that dramatically reduces fore to aft movement, or "chucking", typically felt inside the tow vehicle.

- Lights in all storage compartments
- Automatic ignition furnace with floor ducts
- Enclosed gate valves



KF34RK Slide-out shown with Indigo sofa, recliner and available 32" LCD TV



Cottage Red Décor shown on page 2

DÉCOR CHOICES

Indigo – Deep, warm burgundy blended with taupes and soft blues

Loden Green – Deep, warm greens blended with browns and taupe

Cottage Red – Patterns of nature in reds, browns and tan



KF30SB Rear living area with available free standing table and chairs with under the seat storage shown in Loden décor

KINGSTON SELECT FEATURES



Kingston's water control panel is easily accessible



A rear fiberglass cap is available



Kingston's interior control panel is conveniently located



This generous pass-through storage compartment is perfect for extra gear



Corian® kitchen counter top and bath with Corian sinks are available



Wide, deep drawers with heavy-duty full extension steel glides & ball bearing rollers



PolarTec (Available Upgrade Insulation Package)
CrossRoads RV tested its products in the Dometic extreme temperature chamber. With superior construction and higher R-Values, CrossRoads products exceeded the competition. The furnace in our products cycled longer at extreme cold temperatures than our competitors. In some cases, our competitor's furnaces didn't even cycle at all.

Living Room Standards

- 74" Tall living room slide-outs
- 99" Interior headroom
- Dual glider recliners VBF*
- Residential-style hide-a-bed sofa with airbed mattress
- Flush floor slide-outs with upgraded fascia
- Oil rubbed decorative ceiling fan with 110V light
- LCD TV mounting bracket
- Individual satellite cable for independent tuner
- Entertainment center with DVD AM/FM CD/MP3/iPod plug in & surround sound

Kitchen Standards

- Solid hardwood raised panel cabinet doors
- Wide, deep drawers with heavy-duty full extension steel glides & ball bearing rollers
- Pull out pantry shelves & wastebasket (most models)
- Freestanding table & 4 chairs with storage
- Large bowl kitchen sink & dual cutting boards
- High rise kitchen faucet & water filtration/purifier
- Burnished glaze countertop with backsplash
- 8 cu ft. double door refrigerator with black front
- High-output black range with automatic ignitor, 22" oven, range cover & lighted hood with fan
- Enclosed centralized control panel

Bedroom Standards

- Larger slide-out with 60" x 80" pillow top queen bed
- Under bed storage with lift-assist
- Individual satellite cable for independent tuner
- Full width sliding mirror closet doors
- Padded headboard in bedroom slides
- Spacious wardrobe
- Flush floor upper deck bedroom
- Four oversized dresser drawers with full extension
- Flip up LCD TV bracket

Bathroom Standards

- Residential porcelain toilet
- 34" Corner shower with glass enclosure
- 80" of headroom throughout
- Medicine cabinet with vanity lights & mirror
- Large residential-size bathroom sink
- Power vent fan

Décor Standards

- Three décor choices (see page 6)
- Pleated fabric day/night shades
- Cherry wood finish & accent trim
- Oil rubbed hardware & fixtures
- Oil rubbed decorative lighting
- Residential carpeting & upholstery with fabric protector
- Quilted bedspread with pillow shams
- Linoleum in kitchen and bath

Kingston Package Standards

- Patio awning
- Tinted windows
- Hide-a-leaf table & chairs with storage
- 12V Digital surround system
- Ceiling fan
- Rear landing jacks
- 10 Gallon gas/electric water heater with DSI
- Equa-Flex™ equalizer suspension
- Rota-Flex™ pin box
- Gel glass

Utility Standards

- 10 Gallon gas/electric water heater with DSI
- Water heater bypass
- 65 Amp convertor
- 50 Amp electrical service
- Phone jack in bedroom
- Cable TV hook-up throughout interior & exterior
- Washer/ dryer prep
- 2nd A/C prep in bedroom
- Water heater bypass kit
- EZ winterize kit

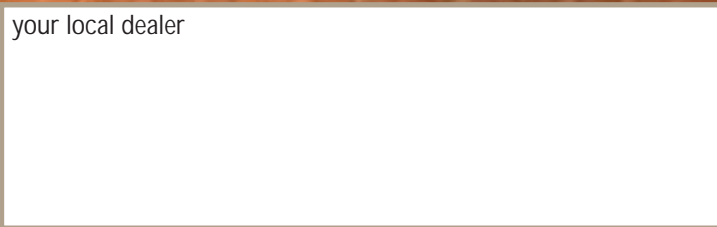


The company conserving today to protect tomorrow.



Thor Industries' strong financial position and industry leadership are your assurance that we will be here to serve you for years to come.

your local dealer



Popular Optional Features

- Pillow top King Bed
- Spare tire & carrier
- Electric awning
- PolarTec upgraded insulation
- Insulated windows
- Safety Windows
- Rear electric jacks
- 16 Gallon water heater
- Outside shower
- 15,000 BTU A/C
- Slide-out awning(s)
- Rain sensor fan(s)
- Central vac system
- 32" LCD TV (42" LCD TV standard in KF35SB)
- Fireplace - varies by floor plan
- 16" Aluminum rims
- Cherry raised panel refrigerator front
- Corian® kitchen counter top and bath with Corian sinks
- Generator prep
- LP generator prep installed
- Rear fiberglass cap (N/A 34RK)

See a complete list of options on the CrossRoads web site!



CrossRoads

888-226-7496
www.crossroadsrv.com

